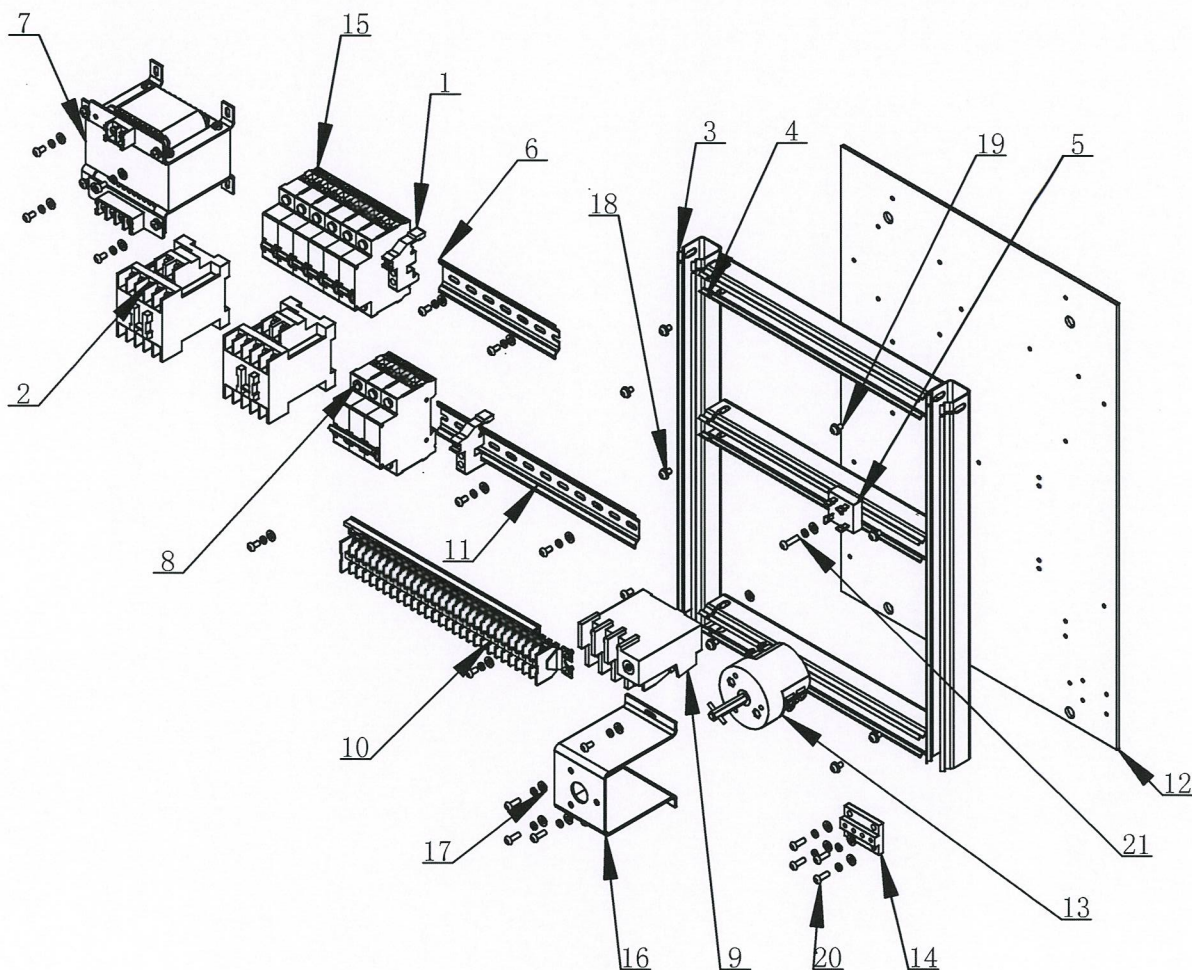
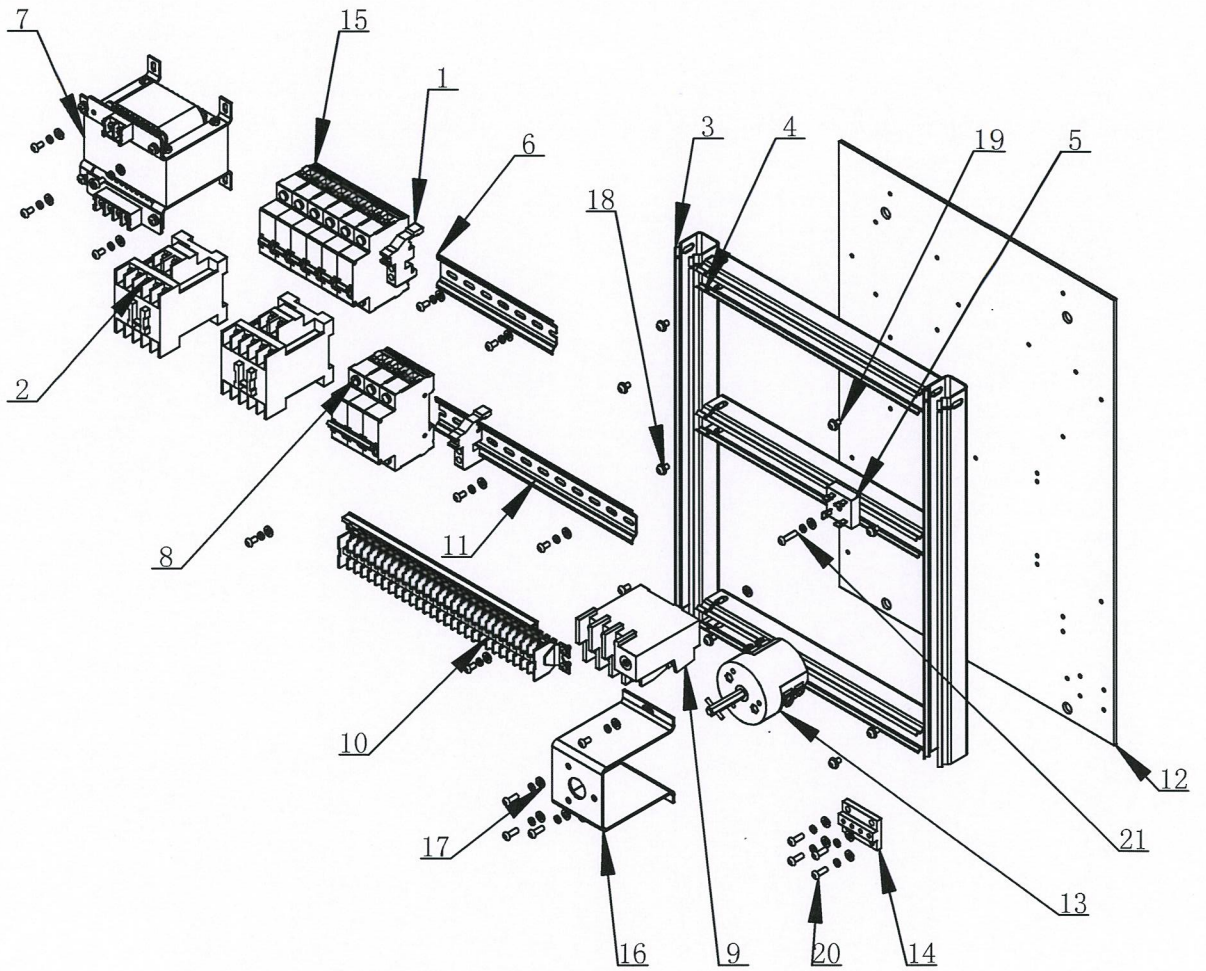


# 6001825 ELECTRICAL CAADINET ASSEMBLY

A-16



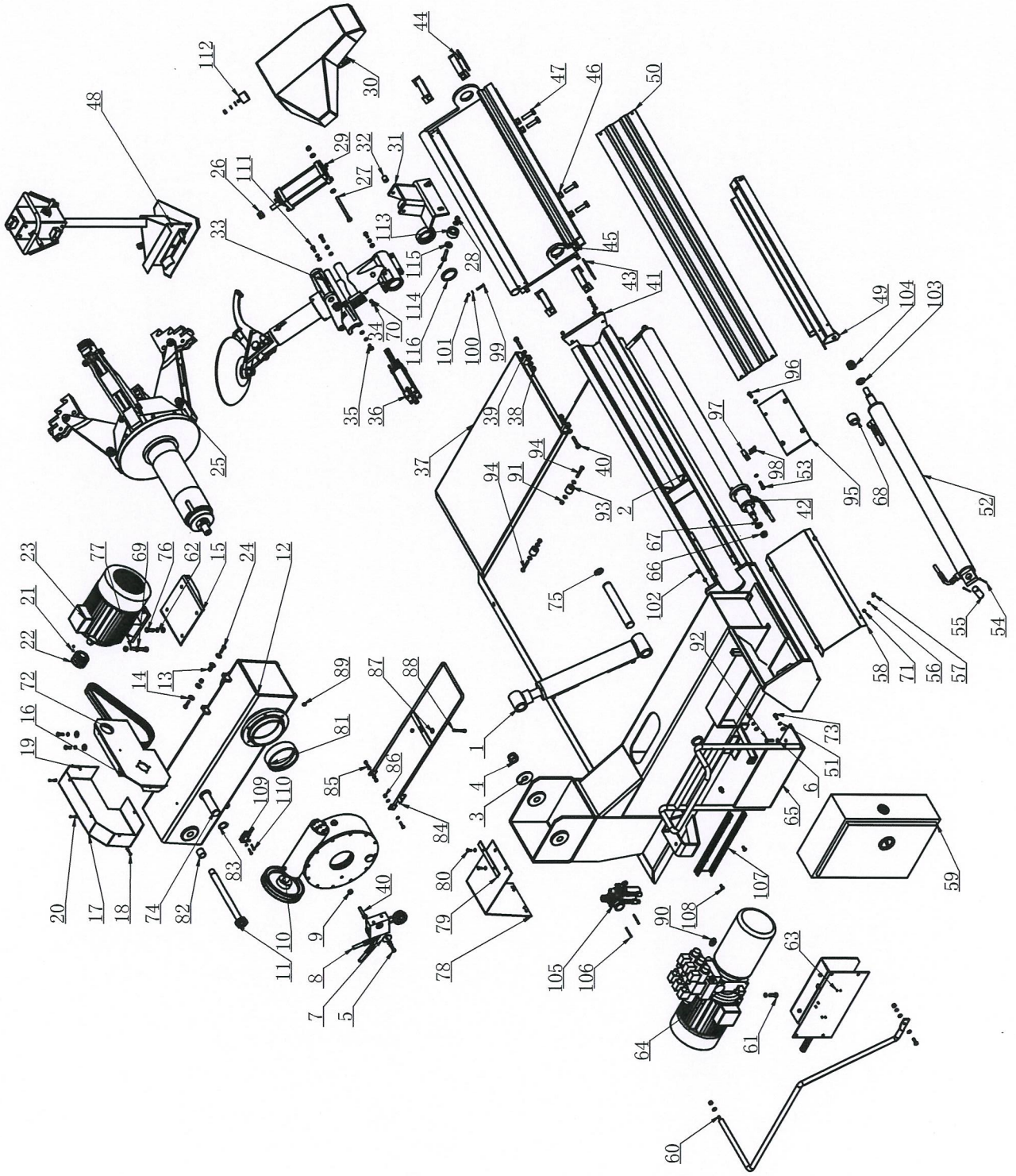
ITEM	QTY.	PART NO.	DESCRIPTION.
1	3	5500053	FIXTURE CLAMP
2	2	5500051	AC CONTACTOR S-P12
3	2	5500045	LONG WIRE GROOVE
4	3	5500044	SHORT WIRE GROOVE 25X30
5	1	5500049	RECTIFIER BRIDGE BLOCK KBPC-2510
6	1	5500047	SHORT FIXTURE PLATE 35mm
7	1	5500042	TRANSFORMER ASSEMBLY JBK3-100
8	1	5500052	TRI-POLE CIRCUIT BREAKER
9	1	5500054	THERMAL OVERLOAD RELAY
10	1	5500095	WIRE ALIGNMENT ASSEMBLY TD-28AA
11	1	5500046	LONG FIXTURE PLATE 35mm
12	1	6001826	SUPPORT
13	1	5500048	COMBINED SWITCH
14	1	6001827	GROUND TERMINATION
15	6	5500096	CIRCUIT BREAKER
16	1	6001079	ON-OFF BRACKET
17	32	5010040	WASHER 4
18	32	5000068	WASHER 4
19	22	5000122	SCREW M4X8
20	9	5000106	SCREW M8X12
21	1	5000124	SCREW M4X16



序号	数量	编码	说明
1	3	5500053	固定夹
2	2	5500051	交流接触器S-P12
3	2	5500045	长走线槽
4	3	5500044	短走线槽
5	1	5500049	整流桥块KBPC-2510
6	1	5500047	短固定板
7	1	5500042	变压器JBK3-100
8	1	5500052	三极断路器DZ47-60/3P/16A
9	1	5500054	热过载继电器JR36-20
10	1	5500095	接线排TD-28AA
11	1	5500046	长固定板
12	1	6001826	电器座板
13	1	5500048	组合开关LW5-25
14	1	6001827	接地端子
15	6	5500096	断路器, 20A 类型D20, 级数1
16	1	6001079	开关支架(380V)
17	32	5010040	垫圈 GB95-4
18	32	5000068	垫圈 GB93-4
19	22	5000122	螺钉 GB/T70.2 M4X8
20	9	5000106	螺钉 GB/T70.2 M8X12
21	1	5000124	螺钉 GB/T70.2 M4X16



590 GENERAL ASSEMBLY



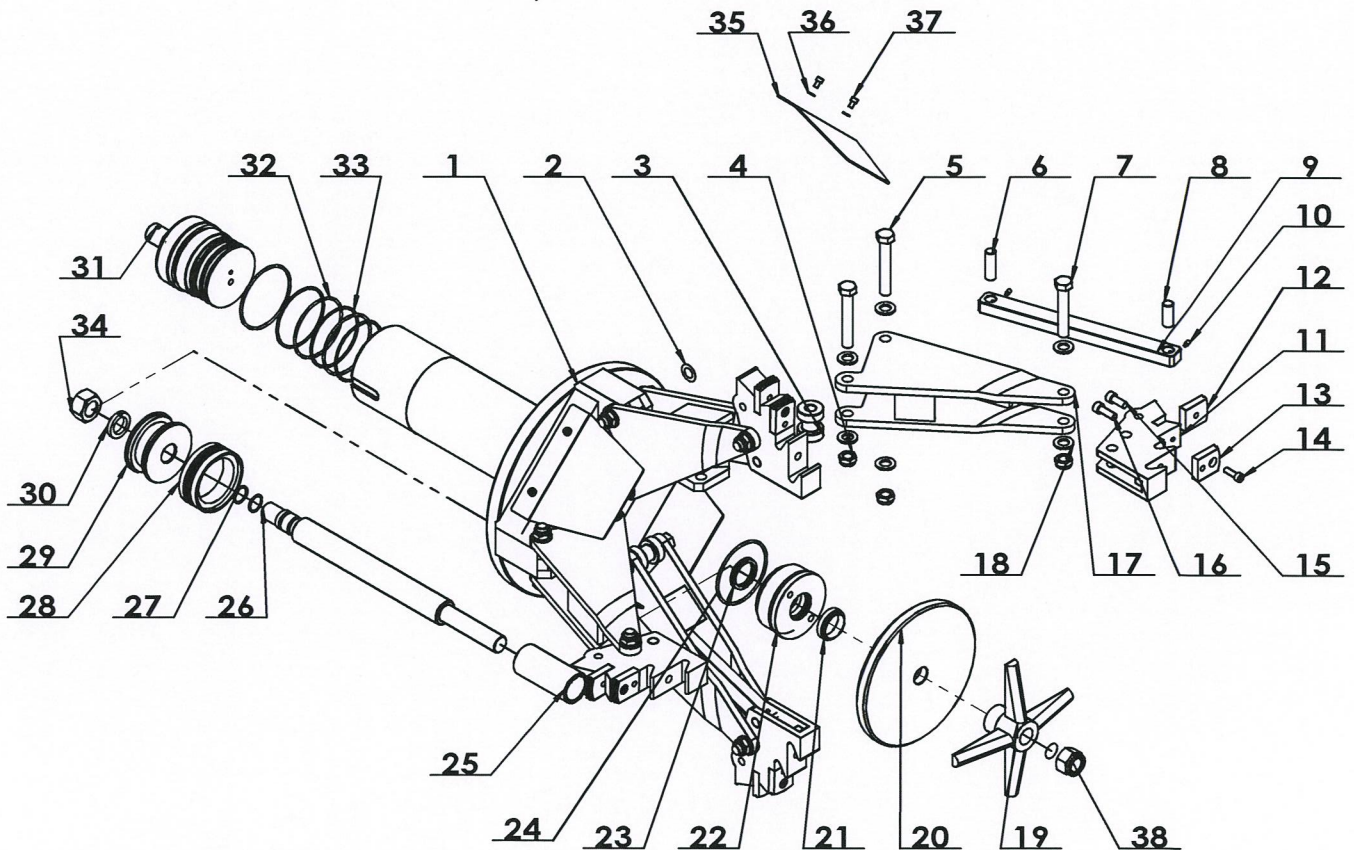


ITEM	QTY.	PART NO.	DESCRIPTION.	ITEM	QTY.	PART NO.	DESCRIPTION.
1	1	6001503	LIFTING OIL TANK	59	1	6001812	ELECTRIC CABINET
2	1	6001515	BODY	60	1	6001813	PROTECTIVE BRACKET
3	1	5000092	WASHER	61	2	5000022	BOLT M10X30
4	1	5000049	NUT M24-N	62	6	5010006	WASHER 10
5	4	5000107	BOLT M8X25-N	63	1	6001815	AIR CONTROLLING ASSEMBLY
6	35	5000018	WASHER 8	64	1	5500093	HYDRAULIC PUMP
7	1	6001555	PRESS COVER	65	1	6001820	BRACKET
8	1	5500091	OIL GUIDER VALVE BODY	66	1	5000105	NUT M16
9	2	5010004	NUT M10	67	1	5010073	WASHER 16
10	1	6001569	GEARBOX ASSEMBLY	68	1	6001823	NYLON COVER
11	1	6001583	LIFTING ARM ROTATION SHAFT	69	5	5004041	WASHER 10
12	1	6001586	LIFTING ARM	70	5	5004008	NUT M6
13	2	5010092	NUT M8	71	16	5000007	WASHER 6
14	6	5010081	WASHER 8	72	2	5500094	BELT A850
15	1	6001612	MOTOR BASE PLATE	73	4	5000002	SCREW M8X16-N
16	1	6001613	MOTOR BOTTOM COVER	74	2	6001824	FIXTURE SHAFT
17	1	6001614	PROTECTIVE COVER	75	2	5000097	CRICLIP
18	4	5000098	SCREW M4X14	76	3	5000086	BOLT M10X35
19	6	5010040	WASHER 4	77	1	5004244	SCREW M6X80
20	3	5000068	WASHER 4	78	1	6001592	RUBBER PLATE
21	2	5000099	SCREW M6X6	79	2	6001593	PRESS PLATE
22	1	6001615	SMALL BELT PULLEY	80	4	5000057	BOLT M6X16-N
23	1	5500092	MOTOR	81	2	6001594	BIG COPPER BUSHING
24	2	5000093	BOLT M8X30-N	82	2	6001595	COPPER BUSHING
25	1	6001616	CLAMP OIL TANK	83	2	5010221	CIRCLIP 35
26	1	5004215	NUT M16	84	1	6001596	BRACKET
27	1	5000094	BOLT M10X140-N	85	2	5006006	SCREW M6X25
28	3	5010043	NUT M10	86	2	5004047	NUT M6
29	1	6001645	LIFTING CYLINDER	87	1	6006077	WASHER 6
30	1	6001653	COVER	88	1	5004244	HSHCS M6X80
31	1	6001659	ROTATION BRACKET	89	1	5000012	OIL CUP M8X1
32	1	6001665	CUSHION BUSHING	90	8	6001738	DOUBLE SCREW
33	1	6001666	SUPPORT ARM	91	10	5002060	NUT M8
34	4	5000114	WASHER 6	92	3	5000030	BOLT M8X30
35	1	5000095	BOLT M8X20-N	93	4	6001597	ROLLER WHEEL
36	1	6001712	SUPPORT PLATE	94	4	5004241	BOLT M8X50-N
37	1	6001720	BACKING PLATE ASSEMBLY WELDING	95	1	6001598	RETAINING PLATE
38	2	5006001	NUT M10	96	10	5000019	BOLT M8X25
39	8	5006005	WASHER 10	97	4	6001599	CABLE CLIPPING BOX
40	3	5000115	BOLT M10x50	98	8	5004063	SCREW M5X25-N
41	1	6001728	RETAINING PLATE	99	2	5004251	SCREW M5X35
42	1	6001729	BRACKET OIL TANK	100	2	5010045	WASHER 5
43	2	6001740	BACKING PLATE	101	2	5004247	NUT M5
44	4	6001741	PLASTIC GUIDE RAIL	102	4	5004248	BOLT M6X12
45	1	6001742	MAIN TRAILER	103	1	5004249	WASHER 20
46	4	5000086	NUT M14	104	1	5004250	NUT M20X1.5
47	4	5000101	BOLT M14X50-N	105	1	5502035	AIR REGULATOR ASSY
48	1	6001761	OPERATION DESK	106	2	5002041	SCREW M4X50-N
49	1	6001793	GUARD BAR	107	1	5500044	SHORT WIRE GROOVE 25X30
50	1	6001798	PROTECTIVE PLATE	108	3	5002010	SCREW M6X16
51	20	5004046	WASHER 8	109	1	5508009	STROKE SWITCH
52	1	6001799	TRAILER OIL TANK	110	2	5000112	NUT M4X25
53	3	5004060	SCREW M8X30-N	111	1	5010077	BOLT M8X20
54	2	5000116	PIN 3. 2X32	112	1	6001600	RUBBER ROLLER
55	1	6001810	FIXTURE PIN SHAFT	113	2	6001601	ROTATION BUSHING
56	4	5010058	WASHER 6	114	2	5010041	BOLT M10X50
57	4	5000117	SCREW M6X12	115	2	5004005	WASHER 10
58	1	6001811	PROTECTIVE PLATE B	116	2	5500082	DUSTPROOF WASHER 60-80



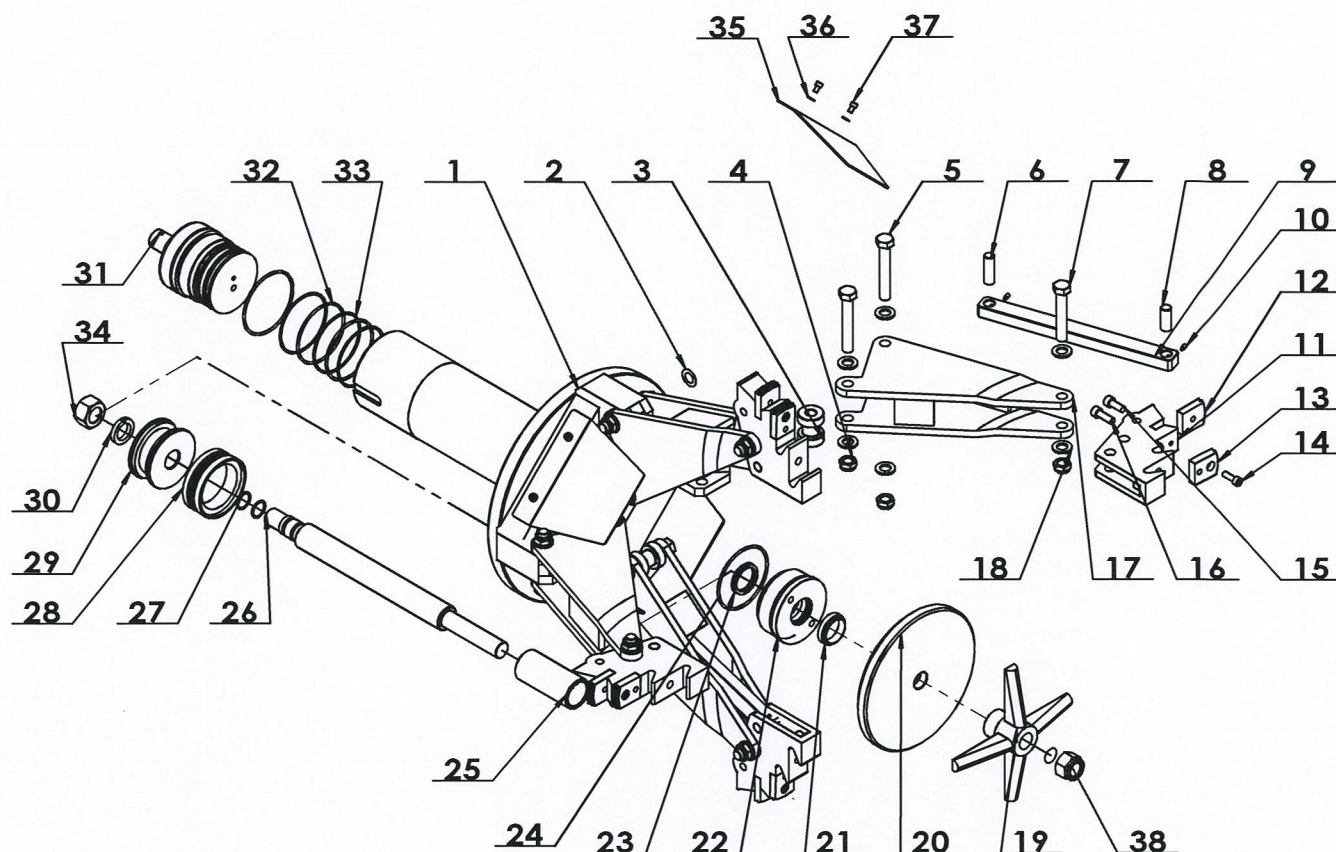
序号	数量	编码	说明	序号	数量	编码	说明
1	1	6001503	升降油缸	59	1	6001812	电控箱
2	1	6001515	箱体	60	1	6001813	护架
3	1	5000092	垫圈大 GB96 24	61	2	5000022	螺栓 GB5781-M10X30
4	1	5000049	螺母六角1型 GB889.1M24	62	6	5010006	垫圈 GB93-10
5	4	5000107	螺栓 GB5783 M8X25	63	1	6001815	气控总成
6	35	5000018	垫圈 GB95-8	64	1	5500093	液压泵站
7	1	6001555	压盖	65	1	6001820	电控箱支架
8	1	5500091	导油体	66	1	5000105	防松螺母 M16
9	2	5010004	螺母 GB41-M10	67	1	5010073	垫圈A级 GB97.1-16
10	1	6001569	减速箱	68	1	6001823	尼龙套
11	1	6001583	升降臂转轴	69	5	5004041	垫圈 GB97.1-10
12	1	6001586	升降臂	70	5	5004008	螺母 GB41-M6
13	2	5010092	螺母 GB889.1-M8	71	16	5000007	垫圈 GB95-6
14	6	5010081	垫圈 GB96-8	72	2	5500094	三角带 GB11544 A850
15	1	6001612	电机底板	73	4	5000002	螺钉 GB70.1 M8X16
16	1	6001613	电机底罩	74	2	6001824	油缸挂轴
17	1	6001614	皮带护罩	75	2	5000097	轴用弹性挡圈GB/T892.4 32
18	4	5000098	十字盘头螺钉GB/T818 M4X14	76	3	5000086	螺栓 GB5781
19	6	5010040	垫圈 GB95-4	77	1	5004244	螺栓 GB5781 M10X80
20	3	5000068	垫圈 GB93-4	78	1	6001592	橡胶板
21	2	5000099	螺钉内六角平端紧定 GB77 M6X6	79	2	6001593	压板
22	1	6001615	小皮带轮	80	4	5000057	螺栓 GB 5781 M6X16-N
23	1	5500092	电机2.2KW 4P/3kW 2P/AC380V/50Hz	81	2	6001594	大铜套
24	2	5000093	螺栓 GB5783 M8X30	82	2	6001595	铜套
25	1	6001616	夹紧油缸部件	83	2	5010221	挡圈轴用 GB894.2-35
26	1	5004215	螺母 GB889.1 M16	84	1	6001596	支架
27	1	5000094	螺栓 GB5780非标特制 M10X140	85	2	5006006	螺钉 GB70.1-M6X25
28	3	5010043	螺母ISO10511-M10	86	2	5004047	螺母 GB889.1-M6
29	1	6001645	起落气缸	87	1	6006077	垫圈大 GB96 6
30	1	6001653	罩	88	1	5004244	螺钉 GB70.1 M6X80
31	1	6001659	转架组焊	89	1	5000012	油杯 M8X1
32	1	6001665	垫套	90	8	6001738	对丝
33	1	6001666	工作臂	91	10	5002060	螺母 GB41 M8
34	4	5000114	垫圈外齿锁紧 GB862 6	92	3	5000030	螺栓 GB5781 M8X30
35	1	5000095	螺栓 GB5783 M8X20	93	4	6001597	滚轮
36	1	6001712	转向气缸	94	4	5004241	螺栓 GB5780 M8X50-N
37	1	6001720	托板组焊件	95	1	6001598	挡板
38	2	5006001	螺母 GB889.1 M10	96	10	5000019	螺栓 GB5781-M8X25
39	8	5006005	垫圈 GB95-10	97	4	6001599	夹线盒
40	3	5000115	螺栓GB5782 M10x50	98	8	5004063	螺钉 GB70.1-M5x25
41	1	6001728	挡板	99	2	5004251	螺钉十字沉头 GB819.1 M5X35
42	1	6001729	工具支架油缸	100	2	5010045	垫圈 GB95-5
43	2	6001740	垫板	101	2	5004247	螺母 GB889.1 M5
44	4	6001741	塑料导轨	102	4	5004248	螺栓 GB5781 M6X12
45	1	6001742	主拖车组焊	103	1	5004249	垫圈 GB95 20
46	4	5000086	螺母 GB/T6172-86 M14	104	1	5004250	螺母 GB889.2 M20X1.5
47	4	5000101	螺栓 GB5781 M14X50	105	1	5502035	气源三联件
48	1	6001761	操作台	106	2	5002041	螺钉GB70 M4X50-N
49	1	6001793	护架组焊	107	1	5500044	短走线槽
50	1	6001798	护板C	108	3	5002010	螺钉GB818 M6X16
51	20	5004046	垫圈 GB93-8	109	1	5508009	行程开关
52	1	6001799	拖板油缸	110	2	5000112	螺钉十字盘头 GB818 M4X25
53	3	5004060	螺钉 GB70-M8X30	111	1	5010077	螺栓 GB5781-M8X20
54	2	5000116	销 GB91 3.2X32	112	1	6001600	胶辊
55	1	6001810	固定销轴	113	2	6001601	转套
56	4	5010058	垫圈 GB93-6	114	2	5010041	螺栓 GB5780-M10X50
57	4	5000117	螺钉十字盘头 GB818 M6X12	115	2	5004005	垫圈 GB96-10
58	1	6001811	护板B	116	2	5500082	防尘圈套 60-80





ITEM	QTY.	PART NO.	DESCRIPTION.	ITEM	QTY.	PART NO.	DESCRIPTION.
1	1	6001617	CLAMP DISK	20	1	6001638	PAD BOARD
2	7	6001622	ADJUSTING WASHER	21	1	5500077	DUSTPROOF WASHER 50X40
3	4	6001623	ROLLER	22	1	6001639	CYLINDER HEAD COVER
4	12	5000105	NUT M16	23	1	5500078	O-RING A 100X3.55
5	8	5010136	BOLT M16X100	24	2	5500079	O-RINGS A 100X3.55
6	1	6001624	PIN SHAFT	25	1	6001640	SPACER
7	4	5000084	BOLT M16X90	26	1	6001641	PISTON ROD
8	4	6001625	PIN SHAFT	27	2	5500080	O-RING A 23.6X2.65
9	4	6001626	CONNECTION PLATE	28	1	5500081	SEALED RING DAS 100-75-35
10	8	5000085	SCREW M6X12	29	1	6001642	PISTON
11	4	6001627	CLAMP	30	1	5000086	WASHER 27
12	4	6001628	CLAMP	31	1	6001643	OIL TANK HEAD COVER
13	4	6001629	CLAMP	32	2	5500063	O-RING A 95X3.55
14	4	5010088	SCREW M8X25	33	3	6001644	BLOCK RING
15	4	5010064	SCREW M10X25	34	1	5000087	NUT M27X2
16	4	5000033	SCREW M10X30	35	4	6001591	PROTECTIVE PLATE
17	4	6001630	CLAMP SUPPORT	36	9	5000007	WASHER 6
18	24	5010073	WASHER 16	37	8	5004220	SCREW M6X10-N
19	1	6001635	BRACKET	38	1	5004237	LOCK NUT M27*2





序号	数量	编码	说明	序号	数量	编码	说明
1	1	6001617	卡盘体	20	1	6001638	垫板
2	7	6001622	调整垫	21	1	5500077	防尘圈 50X40
3	4	6001623	滚柱	22	1	6001639	油缸端盖
4	12	5000105	防松螺母 M16	23	1	5500078	密封圈 50-40
5	8	5010136	螺栓 GB5782-M16X100	24	2	5500079	密封圈O型A GB3452.1 100X3.55
6	1	6001624	销轴	25	1	6001640	隔套
7	4	5000084	螺栓GB5782 M16X90	26	1	6001641	活塞杆
8	4	6001625	销轴	27	2	5500080	密封圈O型A GB3452.1 23.6X2.65
9	4	6001626	拉板	28	1	5500081	密封圈 DAS 100-75-35
10	8	5000085	螺钉 GB79 M6X12	29	1	6001642	活塞
11	4	6001627	卡爪	30	1	5000086	垫圈标准弹簧 GB93 27
12	4	6001628	卡爪	31	1	6001643	油缸端盖
13	4	6001629	快换卡爪	32	2	5500063	O型A GB3452.1 95X3.55
14	4	5010088	螺钉 GB70.1-M8X25	33	3	6001644	挡环
15	4	5010064	螺钉 GB70.1-M10X25	34	1	5000087	螺母 GB6171 M27X2
16	4	5000033	螺钉 GB70.1 M10X30	35	4	6001591	护板A
17	4	6001630	卡爪支撑	36	9	5000007	垫圈 GB95-6
18	24	5010073	垫圈A级 GB97.1-16	37	8	5004220	螺钉 GB70.1 M6X10
19	1	6001635	支架	38	1	5004237	止动螺母 M27*2