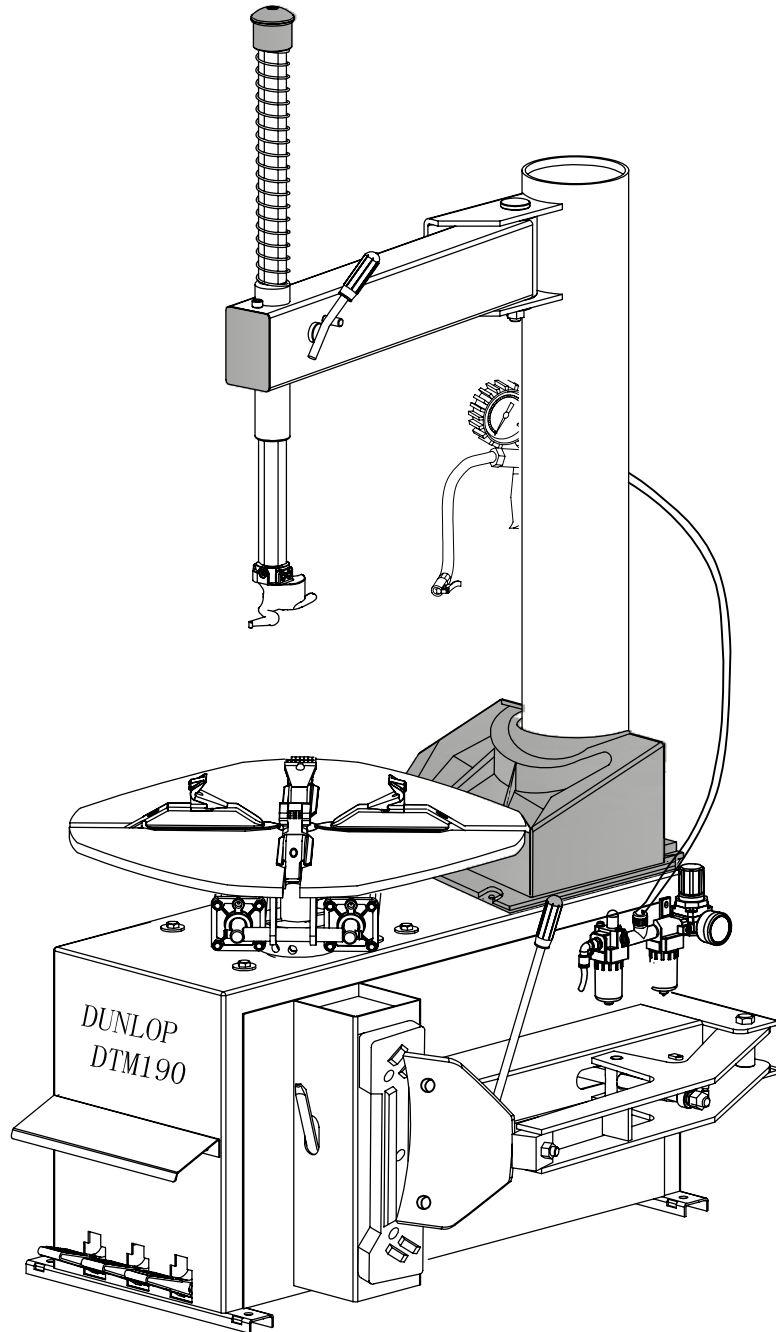




DTM190 SPARE PART

QJ/GM. DTM190. 00F-2007-A



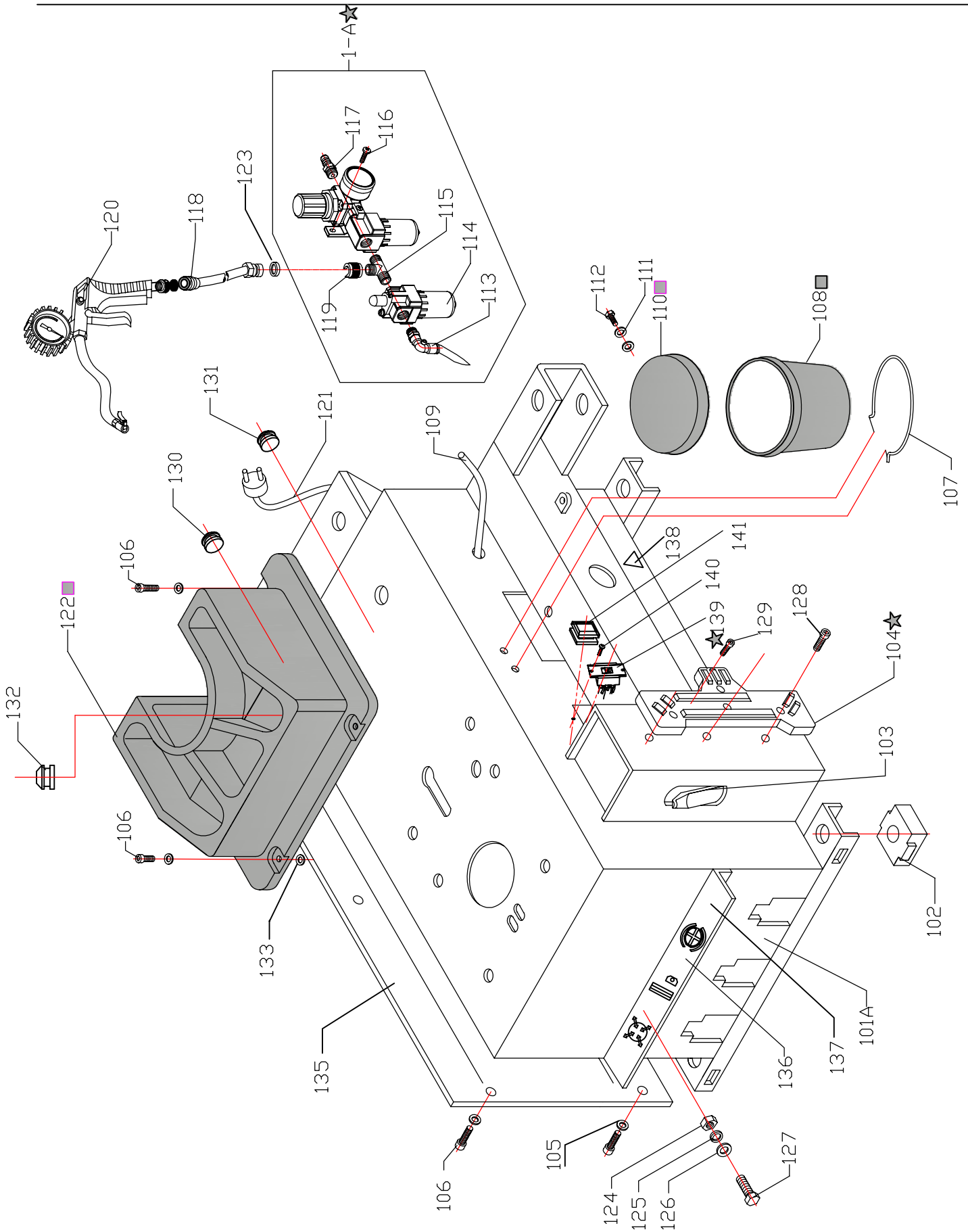
2007. 04. 18

Plastic 
damageable 

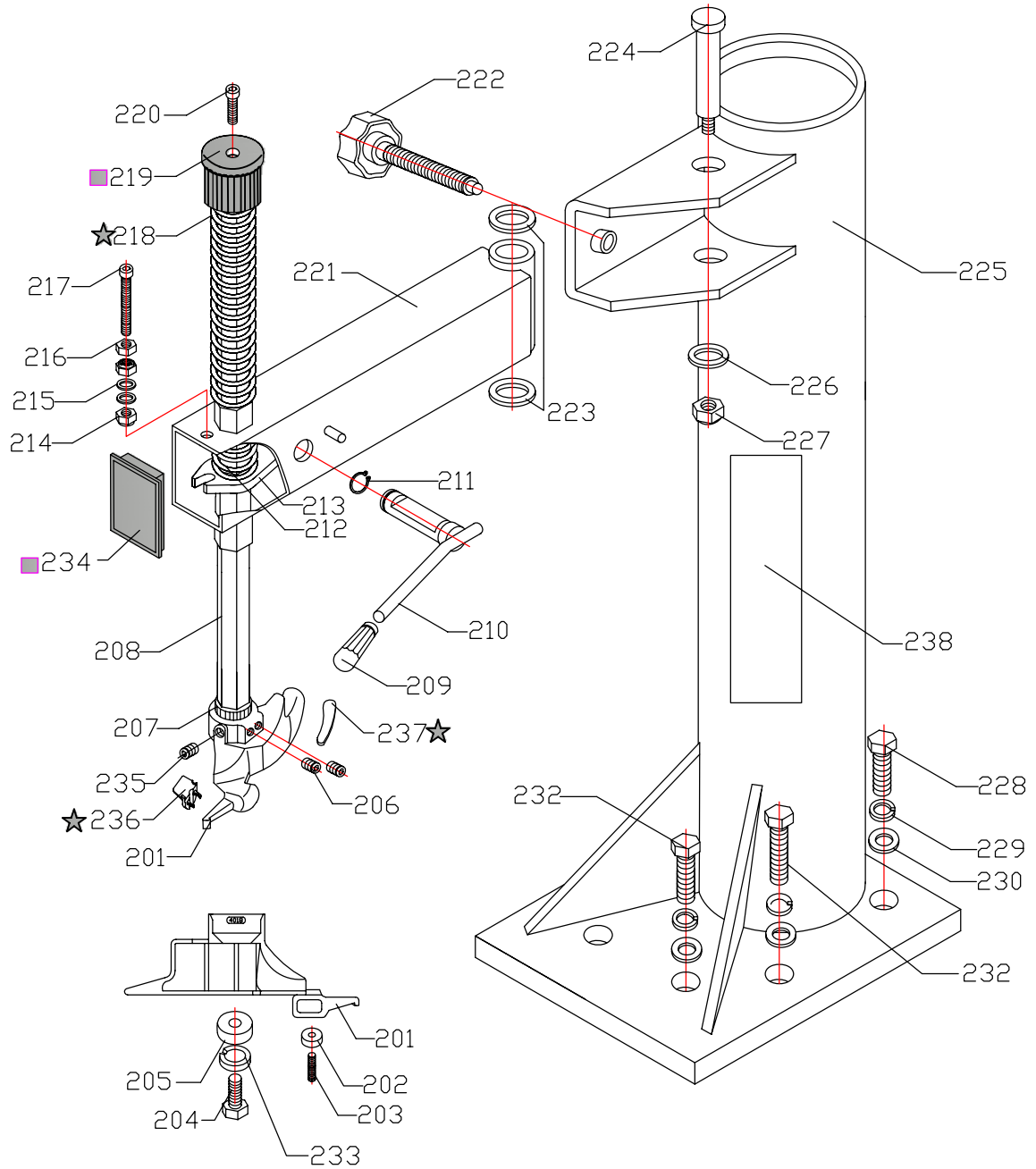
DTM190 SPARE PART-VERTICAL ARM

QJ/GM. DTM190. 00F-2007-A

Page 1 of 6



DTM190 SPARE PART-VERTICAL ARM



DTM190 SPARE PART-VERTICAL ARM

QJ/GM. DTM190. 00F-2007-A

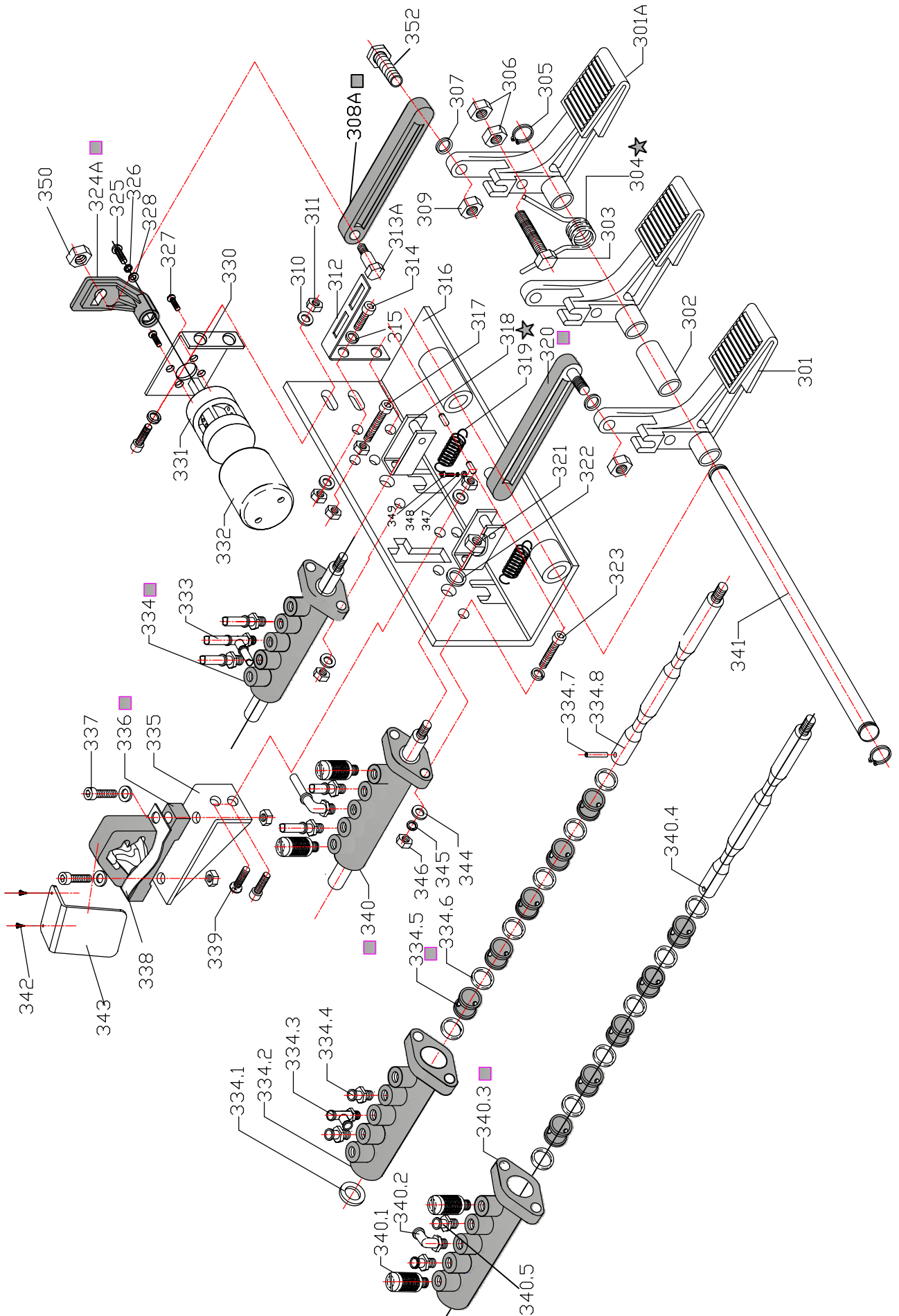
Page 2 of 6

Ref.	Code	Description	Specification	Q' TY	Product NO	Revised NO
201		Mounting head	4#	1		
202	GT890. 03. 12	Roller	13X13	1		
203	GT890. 03. 13	Pin	6X24	1		
204		Screw	M10X25 8.8	1		
205	GT890. 03. 11	Pressing washer	Ø 34XØ11X8	1		
206		Pin	M12X16	2		
207	GT890. 03. 10	Shock absorber	S36	1		
208	GT890. 03. 05	Mounting bar	S36X710	1		
209	GT890. 03. 14	Handle cover	12	1		
210	GT890. 03. 15. 00	Locking handle		1		
211		Seeger ring	25#	1		
212	GT890. 03. 06	Spring	Ø43 (inside) XØ3X63	1		
213	GT890. 03. 07	Locking plate		1		
214		Locknut	M10	2		
215		Flat washer	10	2		
216		Nut	M10	1		
217		Screw	M10X70	1		
218	GT890. 03. 04	Spring	Ø43 (inside) XØ3X520	1		
219	GT890. 03. 03	Knob	M10	1		
220		Screw	M10X30	1		
221	GT890. 03. 02. 00	Horizontal arm		1		
222		Handle wheel	M18	1		
223	GT890. 03. 16	Adjusting washer	Ø 36	2		
224	GT890. 03. 01	Spindle		1		
225	LC890. 02. 00	Vertical arm		1		
226	GT890. 03. 09	Washer		1		
227		Locknut	M16	1		
228		Screw	M12X50	2		
229		Elastic washer	12	6		
230		Flat washer	12	6		
231						
232		Screw	M12X75	4		
233		Elastic washer	10	1		
234	GT890. 03. 08	Cover		1		
235		Screw	M12X12	2		
236		Plastic cover		1		
237		Plastic cover		1		
238		Vertical arm sticker		1		
239						
240						
241						
242						
243						
244						
245						
246						
247						
248						
249						
250						
251						
252						
253						
254						
255						
256						
257						
258						
259						
260						
261						

DTM190 SPARE PART-TURNTABLE

QJ/GM. DTM190. 00F-2007-A
T-D. 02. 00

Page 3 of 6



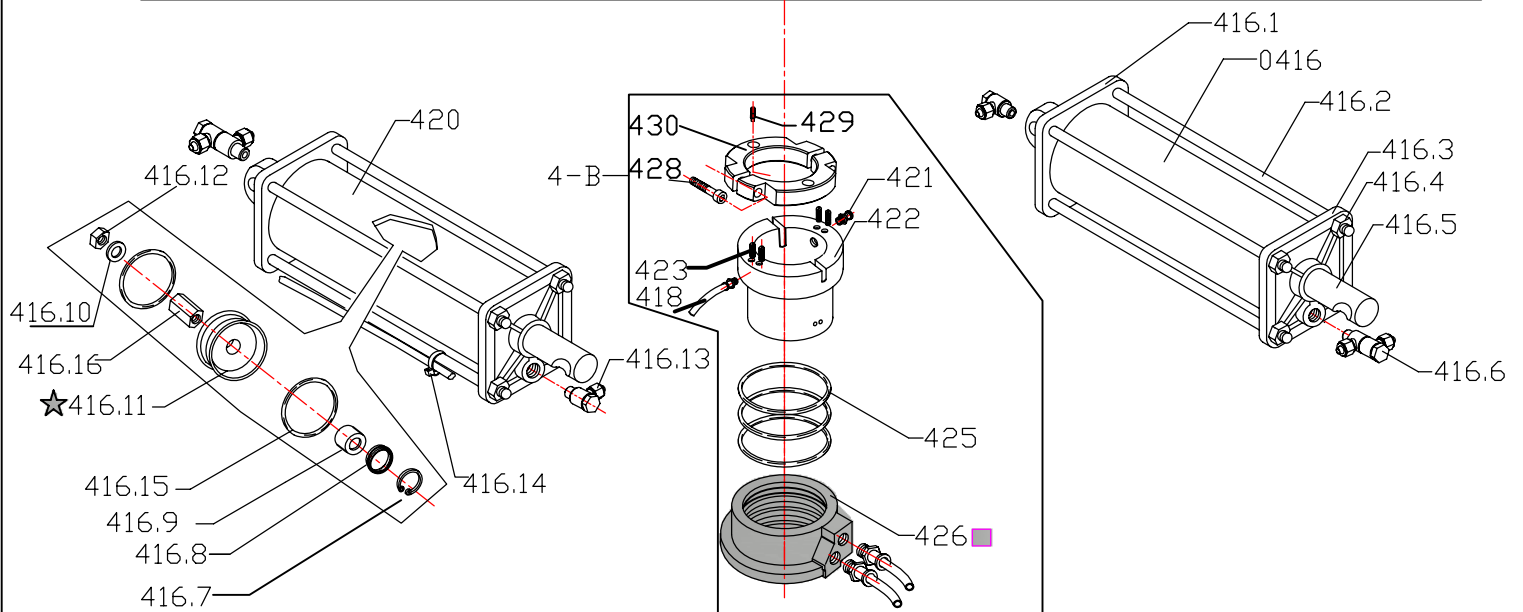
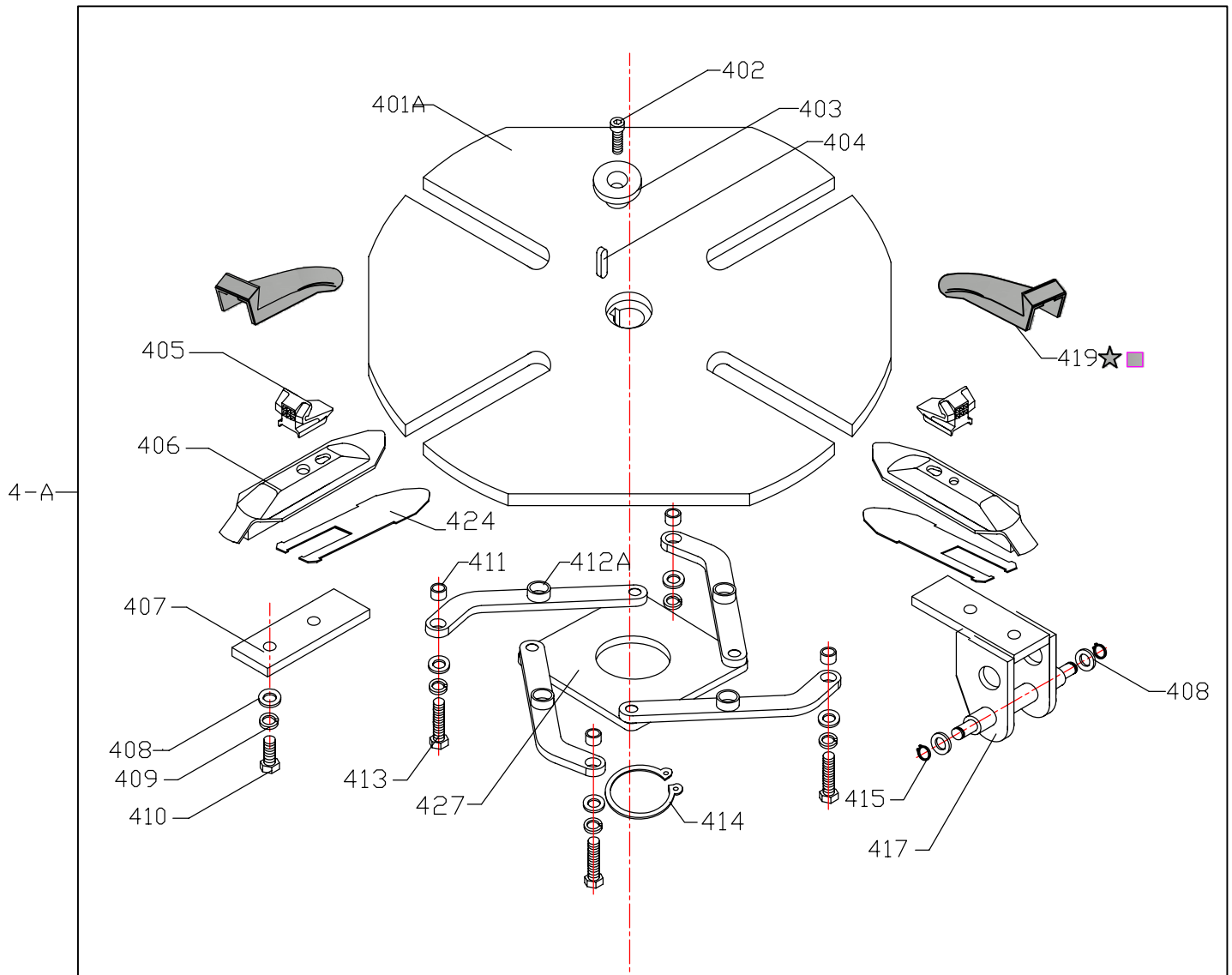
Ref.	Code	Description	Specification	Q'TY	Product NO	Revised NO
301	T-D. 02. 12B	Pedal		2		
301A	T-D. 02. 12C	Pedal		1		
302	T-D. 02. 01	Spacer pedal		1		
303		Screw	M8X55	1		
304	T-D. 02. 02	Spring		1		
305		Seeger ring	14#	2		
306		Nut	M8	2		
307	T-D. 02. 25	Spacer		1		
308A	T-D. 02. 22	Switch connecting rod		1		
309		Locknut	M8	2		
310		Flat washer	6	4		
311		Nut	M6	8		
312	T-D. 02. 21A	Spring bracket		1		
313A	T-D. 02. 26	Spindle		1		
314		Screw	M6X16	5		
315		Elastic washer	6	8		
316	T-D. 02. 03. 00	Pedal bracket		1		
317		Screw	M6X30	1		
318	T-D. 02. 15	Bracket		2		
319	T-D. 02. 04	Spring	2. 3X15. 5 x 54	2		
320	T-D. 02. 11	Connecting rod		1		
321		Locknut	M8	2		
322	T-D. 02. 10	Spacer		4		
323		Screw	M5X25	4		
324A	T-D. 01. 11	Reverse lever	□ 8 big	1		
325		Pin	4X12	1		
326		Elastic washer	4	1		
327		Screw	M5X16	4		
328		Flat washer	4	1		
329						
330	T-D. 02. 17	Switch bracket		1		
331		Reverse switch	40A	1		
332		Reverse switch guide	40A	1		
333		PU hose	∅ 8X5	some		
334		Valve assemble		1		
334. 1		Flat washer	10	1		
334. 2	T-D. 02. 14	Valve body		1		
334. 3		Union	G1/8"-∅ 8	1		
334. 4		Union	G1/8"-∅ 8	2		
334. 5	T-D. 02. 08	Spacer		10		
334. 6		O-ring	∅ 17X4	12		
334. 7		Spring pin	∅ 4X20	1		
334. 8	T-D. 02. 13A	Shaft for cylinder		1		
335	T-D. 02. 05	Cam bracket		1		
336	T-D. 02. 24	Cam		1		
337		Screw	M6X25	2		
338		Fork plate spring		1		
339		Screw	M6X16	1		
340		Valve assemble		1		
340. 1		Silencer	G1/8"	4		
340. 2		Union	G1/8"-∅ 8	1		
340. 3	T-D. 02. 14	Valve body		1		
340. 4	T-D. 02. 07	Valve pin		1		
340. 5		Union	G1/8"-∅ 6	2		
341	T-D. 02. 20	Spindle		1		
342		Pin	M3X10	2		
343		Cam plate		1		
344		Flat washer	∅ 5	8		
345		Elastic washer	∅ 5	4		
346		Nut	M5	4		
347		Flat washer	∅ 10	2		
348		Elastic washer	∅ 10	2		
349		Screw	M10X25	2		
350		Locknut	M8	1		
351						
352		Screw	M8X40	1		
353						

DTM190 SPARE PART-TURNTABLE

QJ/GM. DTM190. 00F-2007-A

T-20Y.00.00

Page 4 of 6

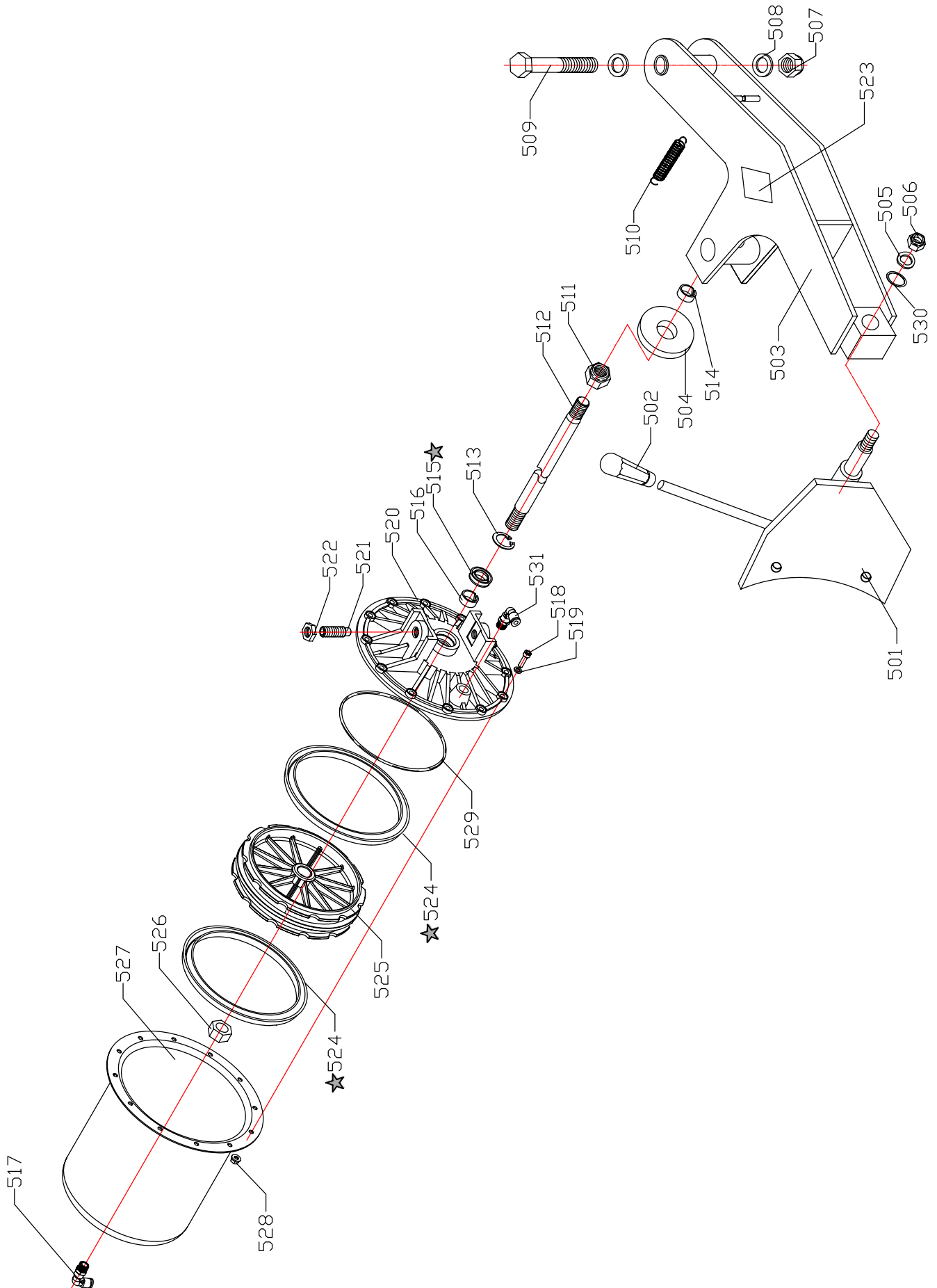


DTM190 SPARE PART-BEAD BREAKER

T-B.02.00A
T-LS.02.00A

QJ/GM. DTM190. 00F-2007-A

Page 5 of 6



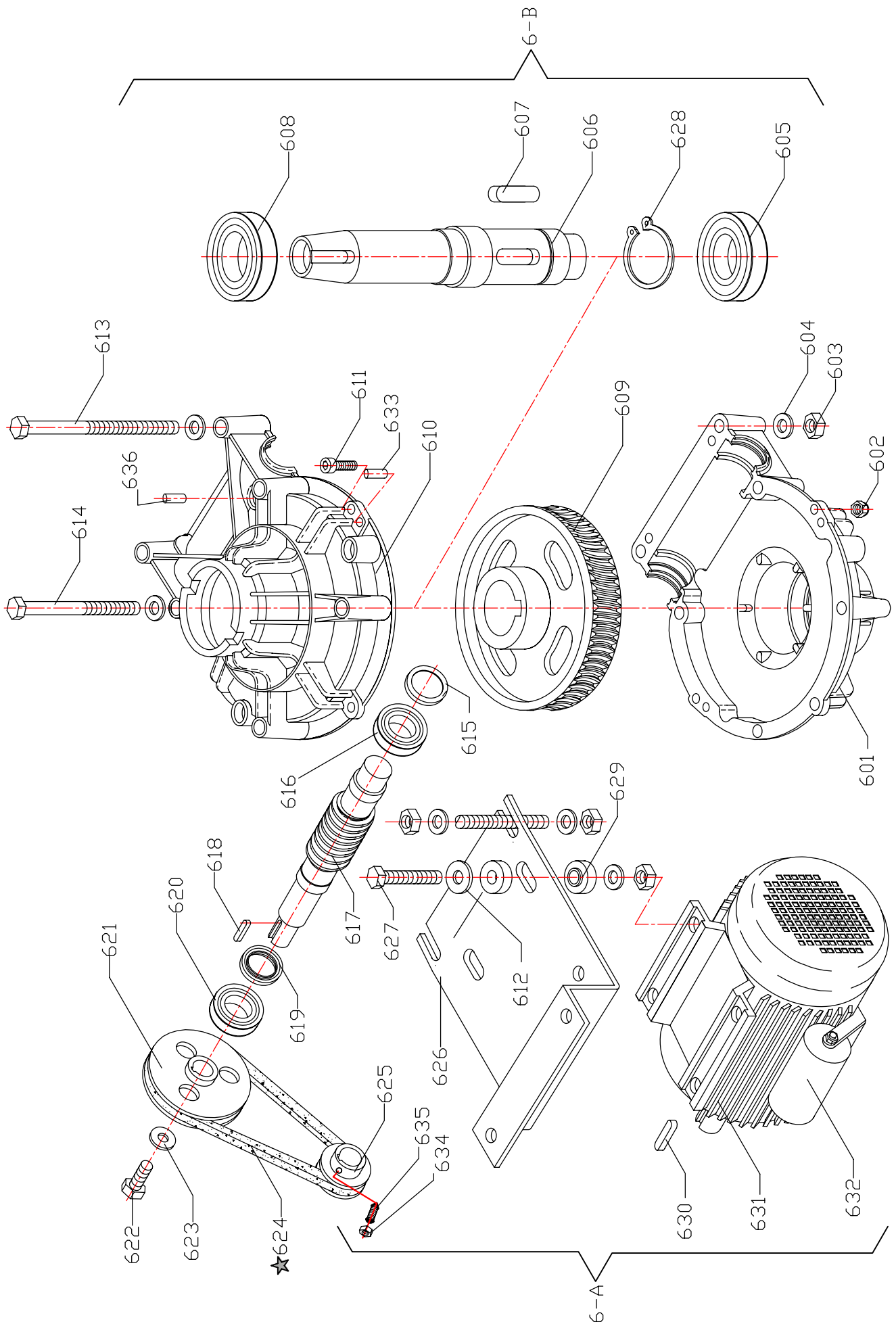
Ref.	Code	Description	Specification	Q' TY	Production NO	Revised NO
501A	T-C.02.00A	Bead breaker shoe		1		
502	GT890.03.14	Handle cover		1		
503	T-B.02.00A	Bead breaker		1		
				1		
504		Washer	Ø80X20X10	1		
505		Washer	14	1		
506		Locknut	M14	1		
507		Locknut	M16	1		
508		Flat washer	16	2		
509		Screw	M16X100	1		
510	T-B.02.07A	Spring	Ø13(inside) XØ2.5X105	1		
511		Locknut	M18X1.5	1		
512	T-LS.02.01A	Cylinder shaft	445mm	1		
513		Seeger ring	30#	1		
514	T-B.02.08	Adjusting washer		1		
515		Y-ring	Ø30XØ20X7	1		
516		Wearable spacer	68X10X2	1		
517		Union	G1/8"-Ø8	1		
518		Screw	M6X20	12		
519		Flat washer	6	12		
520	T-LS.01.04B	Cylinder housing		1		
521		Screw	M14X42	2		
522		Nut	M14-S19	2		
523		Bead breaker label		1		
524		Bowl	Ø186X12X9	2		
525	T-LS.01.02A	Piston		1		
526		Nut	M18X1.5	1		
527	T-LS.01.03B	Cylinder body		1		
528		Nut	M6	12		
529		O-ring	Ø183X5.7	1		
530		Washer	37X13X2.5	1		
531		Union	G1/4"-Ø8	1		
532						
533						
534						
535						
536						
537						
538						
539						
540						
541						
542						
543						
544						
545						
546						
547						
548						
549						
550						
551						
552						
553						
554						
555						
556						
557						
558						
559						
560						
561						
562						
563						
564						

DTM190 SPARE PART-BEAD BREAKER

QJ/GM. DTM190. 00F-2007-A

T-J.00.00

Page 6 of 6



Ref.	Code	Description	Specification	Q' TY	Production NO	Revised NO
601	T-J.00.04A	Lower gearbox housing		1		
602		Nut	M8	5		
603		Nut	M10	18		
604		Flat washer	Ø 10	18		
605		Bearing	6208			
606	T-J.00.01	Spindle	325mm	1		
607		Disk key	14X55	1		
608		Bearing	6010	1		
609	T-J.00.05	Gear wheel with support		1		
610	T-J.00.04	Upper gearbox housing		1		
611		Screw	M8X30	5		
612		Flat washer	10	10		
613		Screw	M10X200	4		
614		Screw	M10X160	2		
615		Cap	40X25X8	1		
616		Bearing	30205	1		
617	T-J.00.09	Worm screw		1		
618		Disk key	6X20	1		
619		O-ring	40X25X8	1		
620		Bearing	30205	1		
621	T-J.00.10A	Belt pulley		1		
622		Screw	M8X12	1		
623		Flat washer	8	1		
624		Belt	A26	1		
625	T-J.00.08B	Motor pulley		1		
626		Motor support		1		
627						
628		Seeger ring	50 #	1		
629		Washer		8		
630		Disk key		1		
631		Motor	220V-50/60HZ	1		
632		Capacitor		1		
6-A		Gearbox assembly		1		
6-B		Motor assembly		1		
633		Pin	8X20	2		
634		Pin	M5X16	1		
635		Nut	M5	1		
636		Pin	M16X15X1.5	1		